



GOOD MORNING

Have Good Trading Day

WEDNESDAY



Price is what you pay.
Value is what you get.

- Warren Buffet



MARKET PULSE

INDIAN INDICES

| NAME | CMP | NET CH. | % |
|--------|-------|---------|-------|
| SENSEX | 29485 | -33 | -0.11 |
| NIFTY | 9121 | -5 | -0.06 |

INDIAN ADR'S

| SYMBOL | CLOSE | GAIN/ LOSS % |
|-----------|-------|--------------|
| DRREDDY | 39.05 | -6.38 |
| HDFCBANK | 72.27 | -1.94 |
| ICICIBK | 8.18 | -3.20 |
| INFY | 15.53 | +0.13 |
| TATAMOTOR | 35.76 | -2.35 |
| WIPRO | 9.97 | +0.10 |

FII AND MF ACTIVITY

| SYMBOL | In Crs. |
|-----------------------|---------|
| FIIs Eq (Provisional) | +1662 |
| FIIs Index Future | -26 |
| FIIs Index Options | -576 |
| FIIs Stock Future | -2390 |
| FIIs Stock Options | +26 |
| DIIs Eq (Provisional) | |

CURRENCY

| RBI RATE | 21-MAR-2017 |
|------------|-------------|
| RUPEE - \$ | 65.3117 |
| EURO | 70.2950 |
| YEN 100 | 57.9500 |
| GBP | 80.6273 |

MARKET PULSE

GLOBAL INDICES

| NAME | CMP | NET CH. | % |
|-----------|-------|---------|-------|
| DOW | 20668 | -237 | -1.14 |
| NASDAQ | 5793 | -107 | -1.83 |
| NIKKEI | 19050 | -405 | -2.08 |
| HANG SENG | 24265 | -327 | -1.33 |
| SGX NIFTY | 9082 | -69 | -0.76 |

WORLD COMMODITIES

| FUTURE | U\$\$ | CHANGES |
|-------------|--------|---------|
| CRUDE | 48.08 | -0.16 |
| NATURAL GAS | 3.143 | -0.012 |
| GOLD | 1245.2 | -1.30 |
| SILVER | 17.525 | -0.058 |
| COPPER | 2.6000 | -0.0185 |

WORLD EVENTS

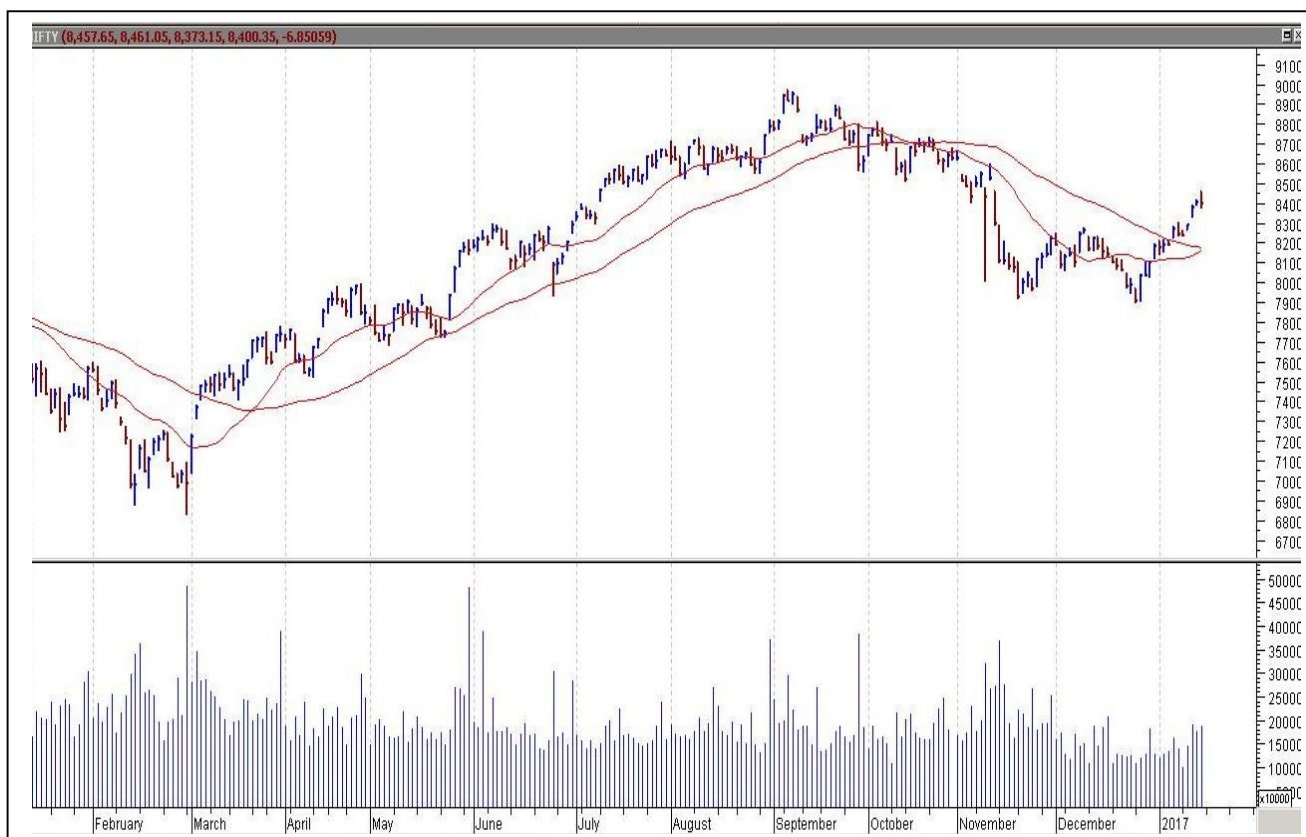
- US: Crude Oil Inventories
- UK: 30-y Bond Auction

TOP STORY

- Idea-Vodafone Merger: KM Birla & Vodafone India CEO Colao Met Telecom Minister Today.
- Nila Infra: Gets 2 Contracts From Gujarat For Development Of Bus Terminals Under PPP.
- WockhardtUS FDA Approves ANDA Of Piperacillin & Tazobactam For Injection USP.
- Puravankara: Board Passes Enabling Resolution To Exit From 3 Investments Worth `403 Cr.
- Tata Teleservices - CARE downgrades rating from A to A- and A1 to A2+.
- HUL commenced commercial production at new unit in Assam plant.
- TVS Motor gets patent for anti break lock system.
- ABC Bearings: Sells Entire 2.5% Stake In NSK-ABC Bearings To NSK India.
- Nettle Infra to buy 21.6% stake in Bharti Infratel for Rs. 12,400 cr.
- Tata Teleservices - CARE downgrades rating from A to A- and A1 to A2+.
- Mawana Sugar agreed to enter into one time settlement with PNB to resolve NPA debt.



NIFTY CHART



MARKET COMMENTARY

Extending previous session's southward journey, Indian equity benchmarks ended the session slightly in red on Tuesday. Soon after a positive start, markets entered into red terrain, as traders reacted negatively to SBI Research report which highlighted that if the UP government fulfils its farmer loan waiver promise, banks are likely to take a hit of Rs 27,420 crore and the scheme will lead to some stress on the state's fiscal arithmetic. The BJP had in its UP election manifesto promised to waive farmers' loans if elected to power. For today's trade Nifty likely to trade in the range between 9135 – 9145 in the upper side and 9095 – 9065 in the lower side.

MARKET LEVELS

| | CMP | SUPPORT LEVELS | | | | RESISTANCE LEVELS | | | |
|--------|-------|----------------|------|-------|------|-------------------|-------|-------|-------|
| NIFTY | 9121 | 9095 | 9065 | 9035 | 9015 | 9135 | 9145 | 9165 | 9185 |
| USDINR | 65.30 | 65.25 | 65.2 | 65.15 | 65.1 | 65.35 | 65.45 | 65.55 | 65.65 |



BULK DEALS (BSE)

| SCRIP | CLIENT NAME | BUY/SELL | QUANTITY | PRICE |
|------------|---|----------|-----------|----------|
| BALKRISIND | KHUSHBOO RAJIV PODDAR | S | 1,921,437 | 1,429.75 |
| BALKRISIND | MANOJ HARJIVANDAS MODI | B | 1,921,437 | 1,429.75 |
| RUPA | BINOD HOSIERY | S | 619,880 | 291.83 |
| TATAMTRDVR | MERRILL LYNCH MARKETS SINGAPORE PTE. LTD. | B | 6,481,660 | 284.6 |
| TATAMTRDVR | SWISS FINANCE CORPORATION (MAURITIUS) LTD | S | 6,481,660 | 284.6 |

BULK DEALS (NSE)

| SCRIP | CLIENT NAME | BUY/SELL | QUANTITY | PRICE |
|------------|--|----------|----------|---------|
| ADVENZYMES | CHANDRAKANT RATHI INNOVATIONS AND PROJECTS PRIVATE LIMITED | BUY | 160023 | 1988.16 |
| AGROPHOS | PROFIN COMMODITIES PRIVATE LIMITED | BUY | 108000 | 21.31 |
| BHARATFIN | CITIGROUP GLOBAL MARKETS MAURITIUS PRIVATE LIMITED | BUY | 800000 | 821.61 |
| LTI | AUBURN LIMITED | BUY | 1724854 | 698 |
| LTI | KOTAK MAHINDRA (INTERNATIONAL) LIMITED | SELL | 1724854 | 698 |

SCRIP'S IN F&O BAN

(To resume for normal trading below 80% of market wide limit required)

BHARATFIN, CEATLTD, CENTURYTEX, JETAIRWAYS, JPASSOCIAT, JSWENERGY, KSCL, RELCAPITAL, SINTEX, WOCKPHARMA, ORIENTBAN K

Initial Public Offering (IPO)

| Company Name | Security type | Issue Start Date | Issue End Date | Status |
|-----------------------------|---------------|------------------|----------------|--------|
| CL EDUCATE LTD. | EQUITY | 20-Mar-2017 | 22-Mar-2017 | OPEN |
| SHANKARA BUILDING PROJ LTD. | EQUITY | 22-Mar-2017 | 24-Mar-2017 | OPEN |



NIFTY 50 STOCKS: SUPPORT & RESISTANCE

| Symbol | Close | Support 1 | Support 2 | Pivot Point | Resistance1 | Resistance2 |
|-------------|-------|-----------|-----------|-------------|-------------|-------------|
| ACC | 1413 | 1406 | 1398 | 1413 | 1421 | 1429 |
| ADANI PORTS | 326 | 321 | 317 | 324 | 329 | 332 |
| AMBUJACEM | 237 | 235 | 232 | 237 | 239 | 241 |
| ASIANPAINT | 1069 | 1060 | 1051 | 1072 | 1081 | 1094 |
| AUROPHARMA | 692 | 683 | 674 | 697 | 706 | 719 |
| AXISBANK | 488 | 483 | 478 | 491 | 497 | 505 |
| BAJAJ-AUTO | 2907 | 2888 | 2869 | 2909 | 2928 | 2949 |
| BANKBARODA | 163 | 161 | 159 | 164 | 166 | 169 |
| BHARTIARTL | 350 | 346 | 342 | 349 | 353 | 356 |
| BHEL | 169 | 167 | 166 | 170 | 171 | 174 |
| BOSCH LTD | 22903 | 22652 | 22401 | 22951 | 23202 | 23501 |
| BPCL | 642 | 634 | 626 | 642 | 649 | 657 |
| CIPLA | 592 | 589 | 585 | 594 | 597 | 602 |
| COALINDIA | 292 | 291 | 289 | 293 | 294 | 296 |
| DRREDDY | 2623 | 2572 | 2521 | 2651 | 2702 | 2781 |
| EICHERMOT | 24962 | 24739 | 24515 | 24953 | 25177 | 25391 |
| GAIL | 370 | 366 | 362 | 371 | 375 | 379 |
| GRASIM | 1092 | 1066 | 1041 | 1082 | 1108 | 1123 |
| HCLTECH | 859 | 849 | 839 | 862 | 872 | 884 |
| HDFC | 1458 | 1447 | 1436 | 1460 | 1471 | 1485 |
| HDFCBANK | 1441 | 1435 | 1429 | 1440 | 1446 | 1451 |
| HEROMOTOCO | 3335 | 3321 | 3308 | 3341 | 3354 | 3373 |
| HINDALCO | 198 | 194 | 191 | 197 | 201 | 204 |
| HINDUNILVR | 903 | 892 | 881 | 900 | 911 | 918 |
| ICICIBANK | 272 | 270 | 268 | 273 | 276 | 279 |
| IDEA | 93 | 89 | 86 | 94 | 97 | 102 |
| INDUSINDBK | 1390 | 1379 | 1367 | 1387 | 1399 | 1408 |
| INFRA TEL | 313 | 311 | 309 | 313 | 315 | 317 |
| INFY | 1033 | 1023 | 1013 | 1029 | 1039 | 1045 |
| ITC | 288 | 284 | 281 | 287 | 290 | 292 |
| KOTAKBANK | 860 | 853 | 847 | 857 | 864 | 868 |
| LT | 1549 | 1540 | 1531 | 1552 | 1561 | 1574 |
| LUPIN | 1454 | 1447 | 1439 | 1456 | 1464 | 1473 |
| M&M | 1294 | 1275 | 1255 | 1290 | 1310 | 1325 |
| MARUTI | 6076 | 6019 | 5961 | 6110 | 6167 | 6258 |
| NTPC | 162 | 161 | 159 | 162 | 163 | 164 |
| ONGC | 194 | 192 | 190 | 193 | 195 | 197 |
| POWERGRID | 193 | 193 | 192 | 194 | 194 | 195 |
| RELIANCE | 1264 | 1254 | 1244 | 1269 | 1279 | 1294 |
| SBIN | 272 | 269 | 266 | 273 | 276 | 280 |
| SUNPHARMA | 698 | 686 | 674 | 696 | 708 | 718 |
| TATAMOTORS | 474 | 470 | 467 | 474 | 478 | 482 |
| TATAMTRDVR | 284 | 282 | 279 | 285 | 288 | 291 |
| TATAPOWER | 88 | 87 | 86 | 87 | 88 | 89 |
| TATASTEEL | 496 | 492 | 488 | 497 | 501 | 506 |
| TCS | 2487 | 2470 | 2454 | 2481 | 2497 | 2508 |
| TECHM | 477 | 473 | 469 | 479 | 483 | 488 |
| ULTRACEMCO | 4008 | 3978 | 3947 | 4003 | 4033 | 4059 |
| WIPRO | 499 | 494 | 489 | 498 | 503 | 507 |
| YESBANK | 1485 | 1462 | 1438 | 1492 | 1515 | 1545 |
| ZEEL | 523 | 518 | 513 | 522 | 527 | 530 |



CORPORATE ACTION / BOARD MEETINGS

NSE Download Ref.No.: NSE/CML/34323:Sub: Delisting Thirty Nine Companies being delisted pursuant to liquidation. This circular shall be effective from March 24, 2017.

NSE Download Ref.No.: NSE/CML/34394: Suspension of trading on account of Scheme of Arrangement -The Oudh Sugar Mills Limited and Upper Ganges Sugar & Industries Limited This Circular shall be effective from March 23, 2017.

NSE Download Ref.No.:NSE/CML/34391:Suspensionof trading in equity shares of Tricom India Limited(TRICOM)This circular shall be effective from March 24, 2017.

NSE Download Ref No :NSE/FAOP/34390:Adjustment of Futures and Options contracts in the security CONCOR.Symbol:CONCOR Bonus issue ratio: 1:4Ex-Date:April 05M,2017.Market Lot: The adjusted market lot shall be arrived at by multiplying the old market lot by the adjustment factor. The Revised market lot would be 625.

NSE Download Ref. No.: NSE/CML/34420: Shifting to Z category Symbol: ABGSHIP, SGJHL, SHRENUJ This circular shall be effective from March 28, 2017.

BOARD MEETINGS

| COMPANY NAME | DATE | PURPOSE |
|--------------|-----------|--|
| BEARDSSELL | 22-Mar-17 | Interim Dividend Rs 1.50 Per Share |
| SUNTV | 22-Mar-17 | Interim Dividend Rs 5/- Per Share (Purpose Revised) |
| PNEUMATIC | 22-Mar-17 | Interim Dividend Rs 7.50 Per Share |
| ENGINERSIN | 23-Mar-17 | Interim Dividend Rs 2.50 Per Share (Purpose Revised) |
| ASAHISONG | 23-Mar-17 | Interim Dividend Rs 3/- Per Share (Purpose Revised) |
| AJANTPHARM | 23-Mar-17 | Interim Dividend Rs 7/- Per Share (Purpose Revised) |
| POLYMED | 24-Mar-17 | Bonus 1:1 |
| SANDESH | 24-Mar-17 | Interim Dividend Rs 5/- Per Share (Purpose Revised) |
| NLCINDIA | 24-Mar-17 | Interim Dividend |
| IBVENTURES | 27-Mar-17 | Interim Dividend Re 1/- Per Share |
| PTL | 27-Mar-17 | Scheme Of Arrangement |
| HINDZINC | 29-Mar-17 | Interim Dividend (Date Revised) |
| UNITEDTEA | 30-Mar-17 | Interim Dividend |
| MUTHOOTFIN | 30-Mar-17 | Interim Dividend |
| MPHASIS | 30-Mar-17 | Buyback |
| CONCOR | 5-Apr-17 | Bonus 1:4 |
| LINDEINDIA | 7-Apr-17 | Annual General Meeting/Dividend Re 0.75 Per Share |
| KSBPUMPS | 12-Apr-17 | Annual General Meeting/Dividend - Rs 5.50 Per Share |
| | | |
| | | |
| | | |
| | | |

NEWS & RUMOURS:

- Gold (Spot Dollar) major support = \$1206/\$1177 & Resistance = \$1278/\$1312.
- Crude oil range->\$43 to \$53.
- U.S. Stocks, Dollar Slump as Reflation Trade Fades: Markets Wrap: - U.S. stocks fell to a one-week low, while the dollar extended its slump to the longest since November as investors assessed the prospects for Donald Trump's pro-growth policies gaining Congressional approval.
- Dollar index extends losses, touches 6-week lows: - The dollar extended losses against the other major currencies on Tuesday, pressured lower by the view that the Federal Reserve won't accelerate the pace of monetary tightening. The dollar was also on the defensive after [G20 financial leaders dropped a pledge to keep global trade free and open](#) from a policy statement at the weekend, following opposition from the increasingly protectionist Trump administration.
- Gold climbs to more than 2-week high as dollar sinks: - Gold prices rose to a more than two-week high during North American hours on Tuesday, as the U.S. dollar continued to head south in wake of the Federal Reserve's dovish guidance on the future pace of rate hikes.
- U.S. natural gas extends gains to reach 5-week highs: - U.S. natural gas futures extended gains to a third session on Tuesday, hitting the strongest level since February as forecasts showing cooler weather on the way continued to boost the heating fuel. Cool temperatures will sweep across the Great Lakes and eastern U.S. toward the middle of the week, according to forecasters at NatGasWeather.com, with overnight lows expected to drop well below freezing.

TRENDS & OUTLOOK – DATE: 22- Mar- 2017

PRECIOUS METALS:

| COMMDITY (MCX) | S2 | S1 | PIVOT POINT | R1 | R2 |
|----------------|-------|-------|-------------|-------|-------|
| GOLD (Apr) | 28130 | 28365 | 28660 | 29050 | 29375 |
| SILVER (May) | 38500 | 39900 | 41000 | 42365 | 43560 |

BASE METALS

| COMMDITY (MCX) | S2 | S1 | PIVOT POINT | R1 | R2 |
|----------------|--------|--------|-------------|--------|--------|
| COPPER (Apr) | 369 | 374 | 381 | 386 | 392 |
| ZINC (Mar) | 176.55 | 180.25 | 185.20 | 189.25 | 193.40 |
| LEAD (Mar) | 140.40 | 143.55 | 148.30 | 152.65 | 156.75 |
| NICKEL (Mar) | 630 | 645 | 663 | 684 | 697 |

ENERGY

| COMMDITY (MCX) | S2 | S1 | PIVOT POINT | R1 | R2 |
|-------------------|------|------|-------------|------|------|
| CRUDE OIL (Apr) | 2975 | 3094 | 3195 | 3333 | 3457 |
| NATURAL GAS (Mar) | 189 | 194 | 201 | 207 | 212 |

DATA TALKS : TODAY'S ECONOMIC DATA :

RBA Assist Gov Debelle Speaks, HPI m/m, SNB Quarterly Bulletin, Existing Home Sales, Crude Oil Inventories.



LET THE
WOMAN
POWER RISE

**WOMEN
DESK**

All the Ladies in the house are
cordially invited to come
& explore their trading talents.

TOLL FREE: 18001030059



Registered Office

Indira House, 3rd Floor, 5 Topiwala Lane,
Opp. Lemington Road Police Station, Grant Road (East), Mumbai - 400007.

Corporate Office

'Ramavat House' E-15, Saket Nagar, Indore - 452018 (M.P.)

Customer Care

Tel: +91-731-4097170/ 71/ 72/ 73/ 74 M. +91 93031 72345

Email: customercare@indiratrade.com www.indiratrade.com



INSTITUTIONAL DEALING UNIT

Africa House, 5, Topiwalla Lane, Lamington Road, Mumbai, 400007

Tel: +91 22 30080678 Fax : +91 22 23870767 Email : ie@indiratrade.com

Disclaimer

This report is for private circulation within the Indira Group. This report is strictly confidential and for information of the selected recipient only and may not be altered in any way, transmitted to, copied or distributed, in part or in whole, to any other person or to the media or reproduced in any form. This report should not be construed as an offer or solicitation to buy or sell any securities or any interest in securities. It does not constitute a personal recommendation or take into account the particular investment objectives, financial situations, or any such factor. The information, opinions estimates and forecasts contained here have been obtained from, or are based upon, sources we believe to be reliable, but no representation of warranty, express or implied, is made by us to their accuracy or completeness. Opinions expressed are our current opinions as of the date appearing on this material only and are subject to change without notice.